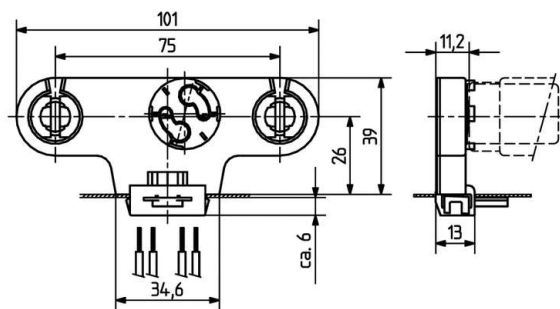


 Create pdf

Lampholders and starter holders

26.301.5001

G13 Twin lampholders



colour	pkg.	wt.	part no.
white	200	18 g	26.301.5001.50

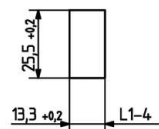
With starter holder

Wiring: through the body

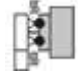
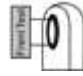


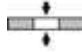

Lamp centre: 26 mm
Snap in foot 13.3 x 25.5 mm

Housing: PC
Rotor: PBT

- A pair of lampholders provides a lamp length tolerance compensation of 3 mm
- The pre-wired lampholder can be enclosed unmounted within the light fitting for packaging purposes.



L1-4: Recommended dimension - the final distance should be governed by the dimensions of the respective lamps and luminaires.

T 130	Tm 110						
					0.5 - 1.0 mm ²	0.5 - 1.0	

Document generated on: Th, 9. February 2017 - 14:44